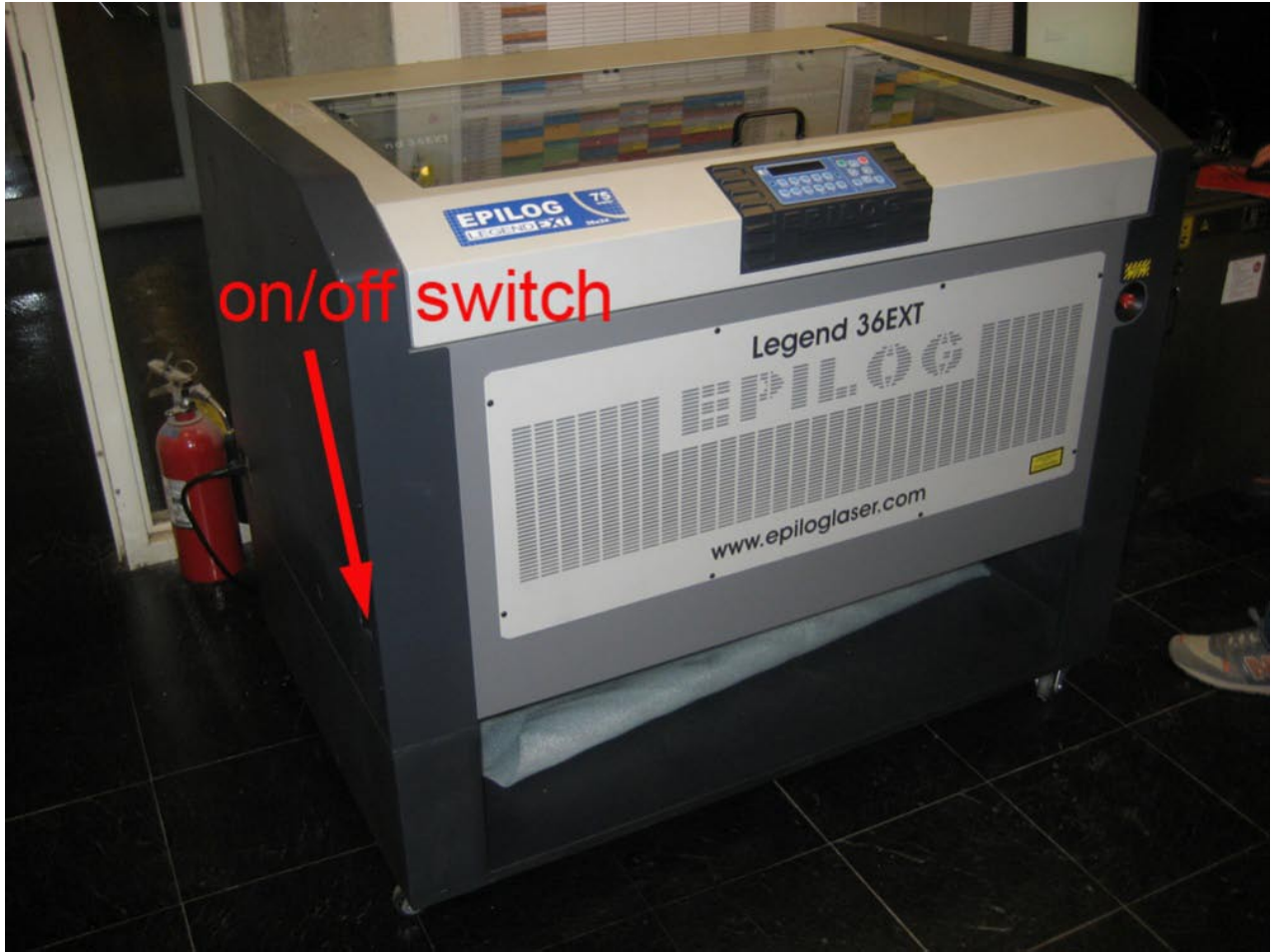


# EPILOG QUICK START



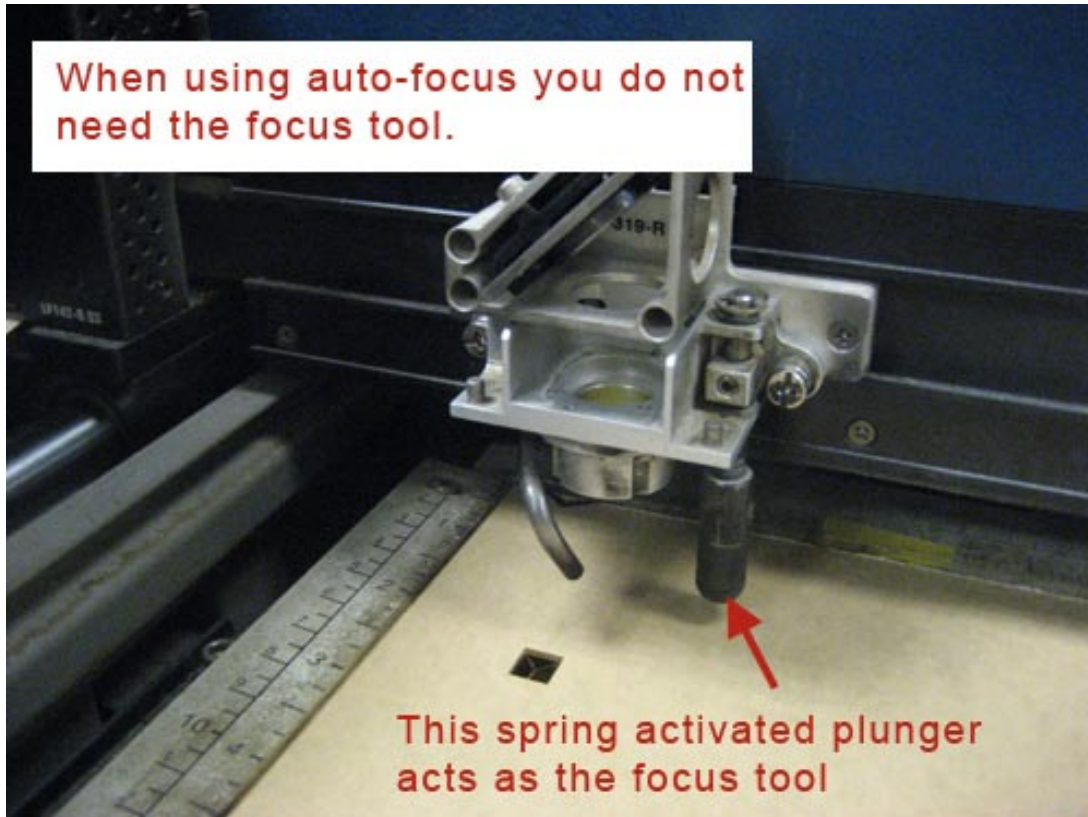
1. Turn on Laser. You may have to reset by using the on/off button if the laser if it doesn't seem to want to accept the print job you are sending.



## FOCUSING THE LASER

### AUTO-FOCUS METHOD:

1. Pressing the FOCUS button and then the GO button tells the machine to go through its Auto-Focus sequence of raising, then lowering, the table. This allows the user to Auto Focus from the machine without sending a print job through the driver. It's intended to combine the best features of manual and auto-focus into one operation.

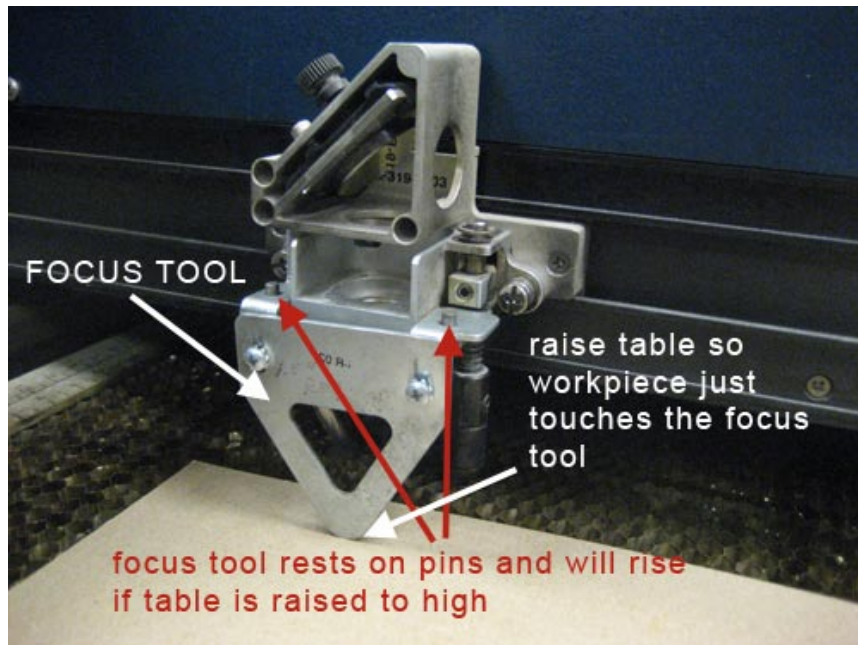
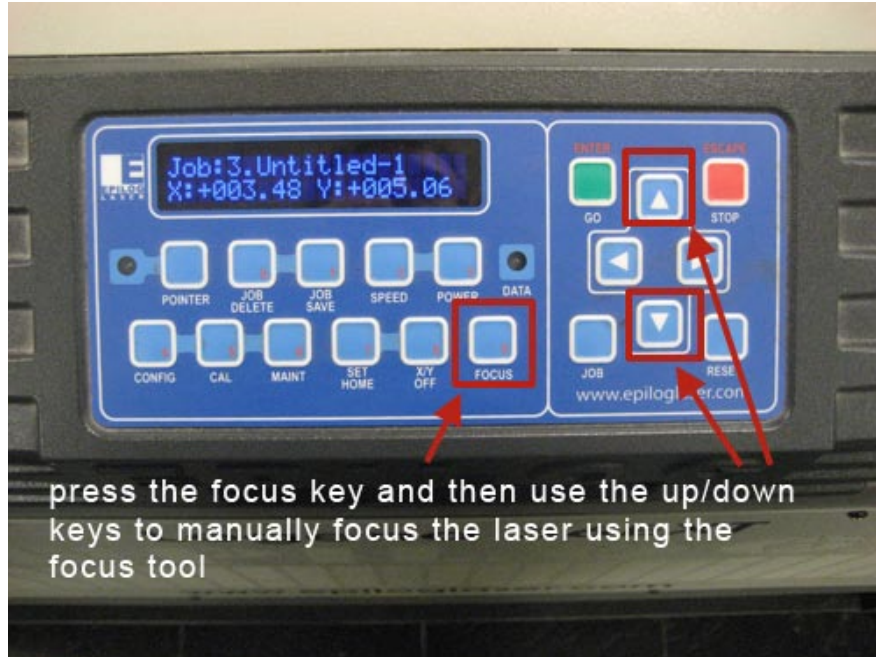


**Note:** When the FOCUS button is pressed, and the carriage is in its Home position, the carriage will move out (forward and to the right) several inches (~ 50 mm) from its standard “park” position in the upper left corner. If the table is too high, the carriage may collide with any material that is between the park position and the focus position. To prevent the carriage from colliding with your material, you can do one of two things:

1. Press the STOP button first before pressing the FOCUS button. Pressing the STOP button immediately before pressing the FOCUS button holds the carriage in its park position, allowing you to lower the table with your material in place.
2. Remove your material, press the FOCUS button and use the DOWN button to lower the table.

Manual Focus Method:

1. Pressing the FOCUS button allows the operator to raise or lower the table by pressing the UP or DOWN cursor keys. This method allows for quick and easy manual focusing.





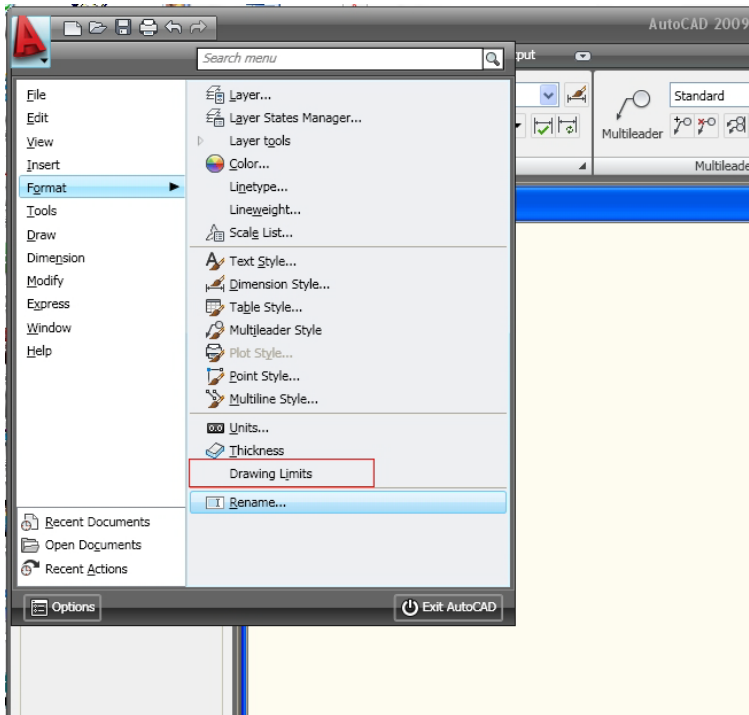
2. You can manually focus anywhere on the table by pressing the X/Y Off key then the Go key. This disables the X/Y axes and allows you to move the carriage by hand to any location



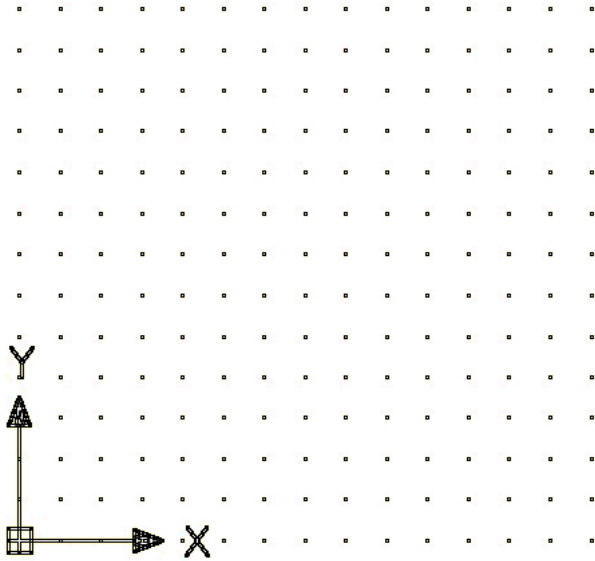
THE EPILOG MACHINE WORKS BETTER WITH COREL DRAW THAN WITH AUTOCAD. YOU CAN IMPORT YOUR WORK INTO COREL WHICH IS INSTALLED ON THE EPILOG COMPUTER OR YOU CAN FOLLOW THE GUIDELINES BELOW TO PRINT FROM AUTOCAD:

PRINTING FROM AUTOCAD:

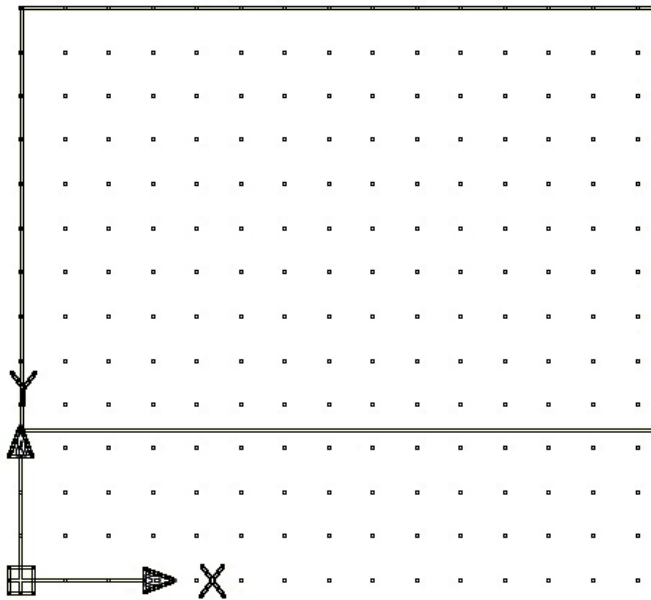
3. **The EPILOG laser will rotate your work 90 degrees if you do not set up you AutoCad file accordingly.** In AutoCad set the Model Space to a size 36"x36". Go to Format-Drawing Limits:



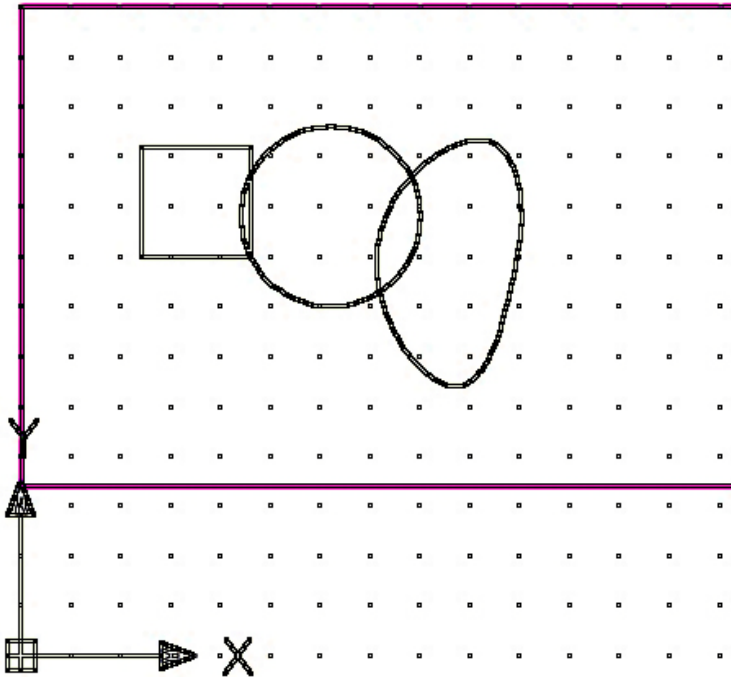
4. Your AutoCad model space grid should look like this:



5. Draw a 36"x24" rectangle which represents the size of the laser bed:

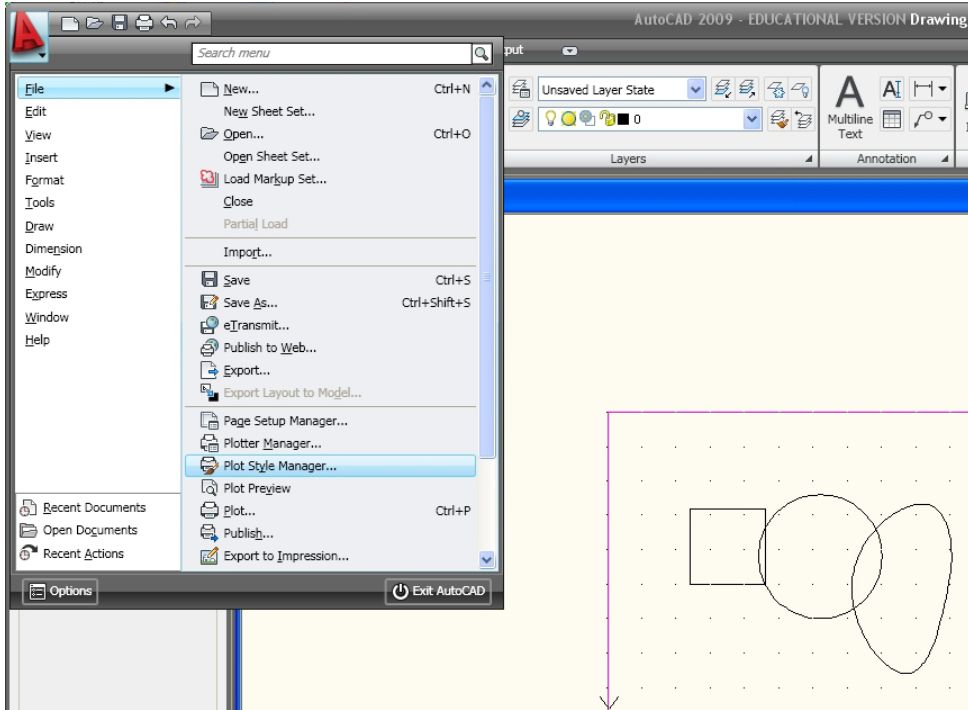


6. Draw or Import your geometry.

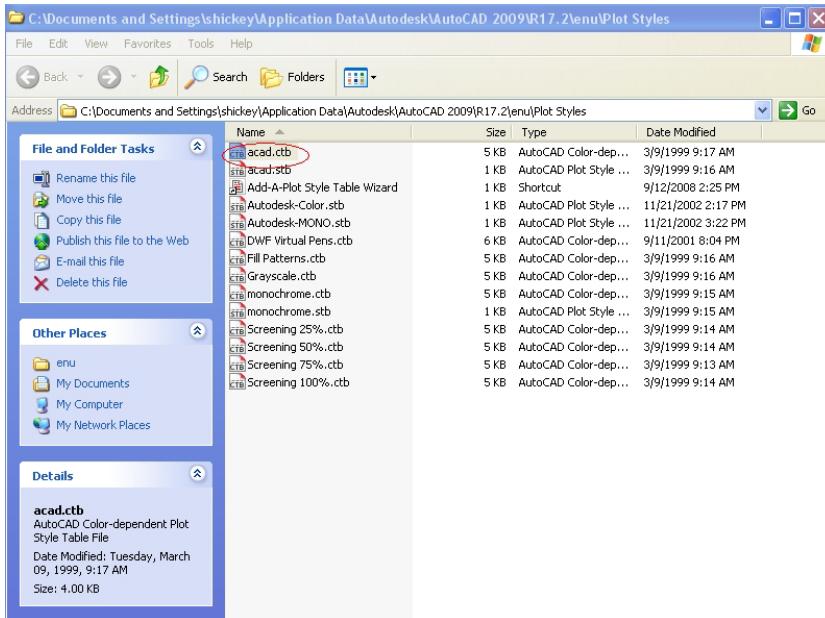


7. All line weights have to be .001" to cut vectors. You can either create them with that line weight or change them individually to that line weight. **You cannot select them all with a selection window and set them too .001" (it groups them all together and you color management setting will not work).** In order to get all your lies to plot regardless of line weights assigned to individual features you can go to Plot Style Manager and set it use a plot style to transform your lie weights to .001" before plotting.

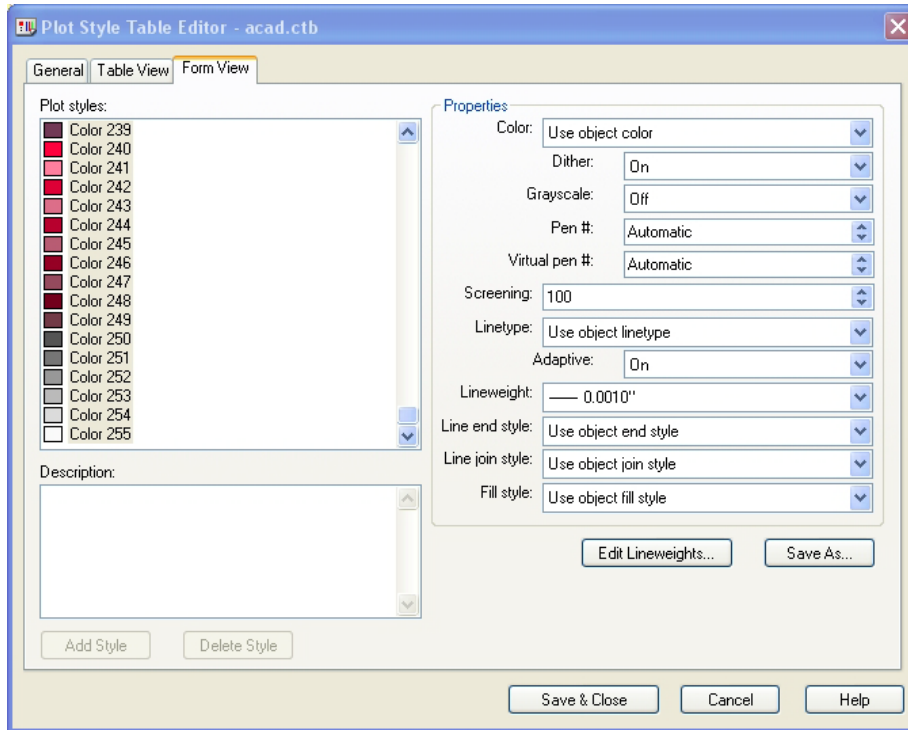




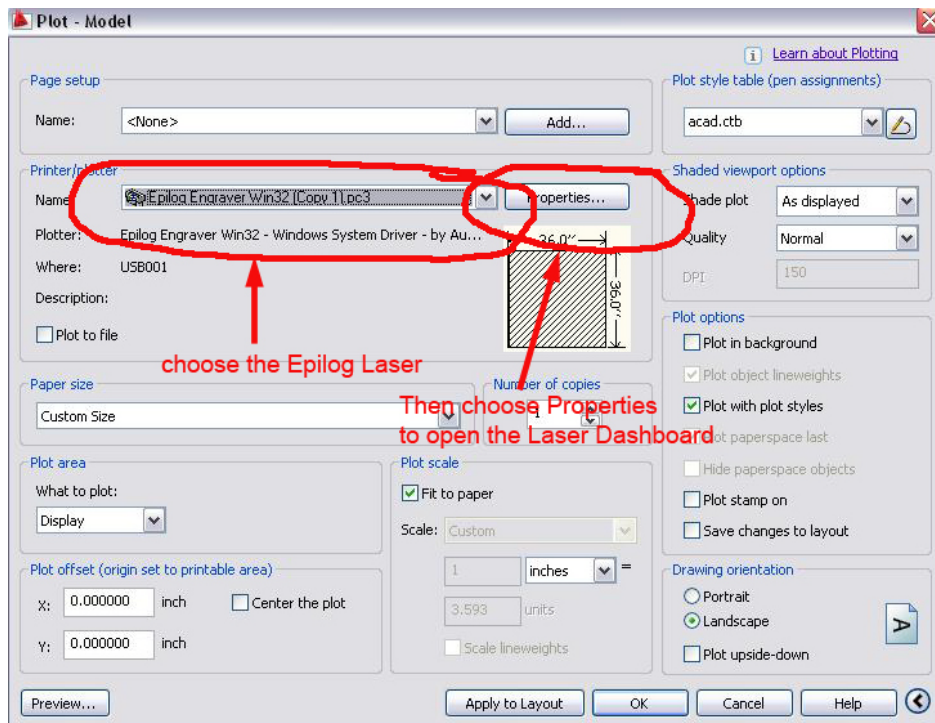
8. Choose and double click on the “acad.ctb” file



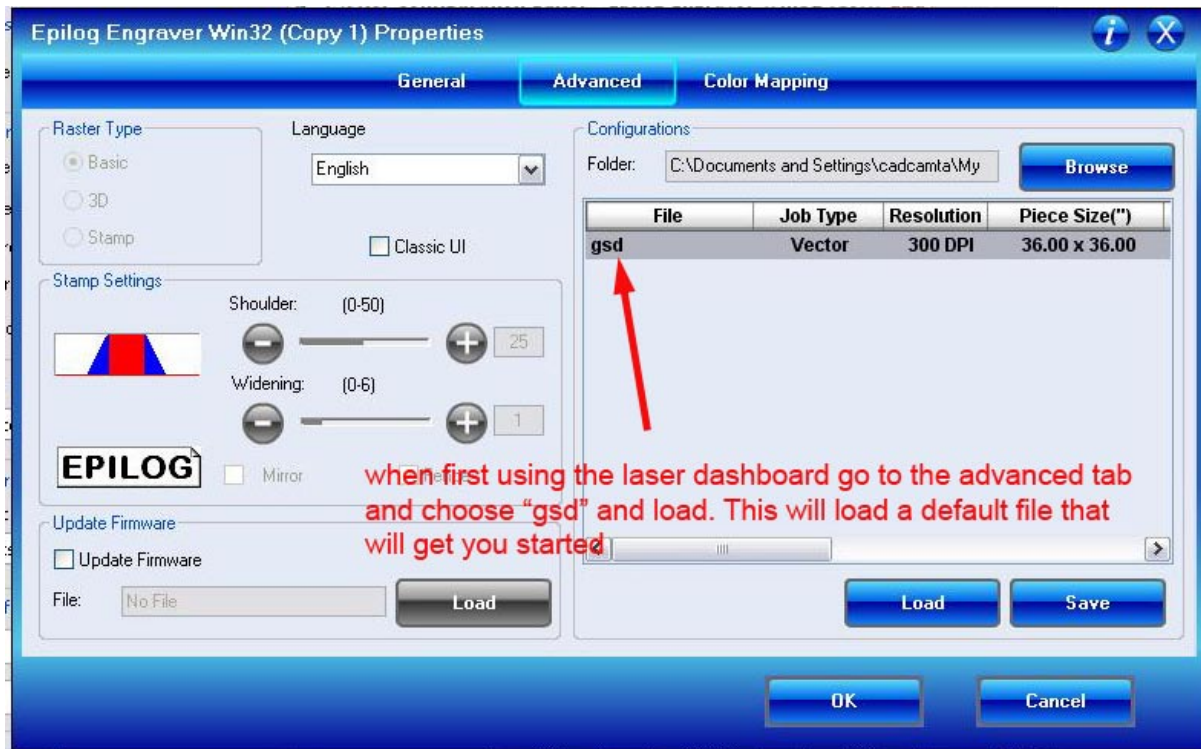
9. Select all the colors (or just the ones you are using) and set them to .001". You may have to Edit Line-weights and choose inches as units and make a .001" line-weight.



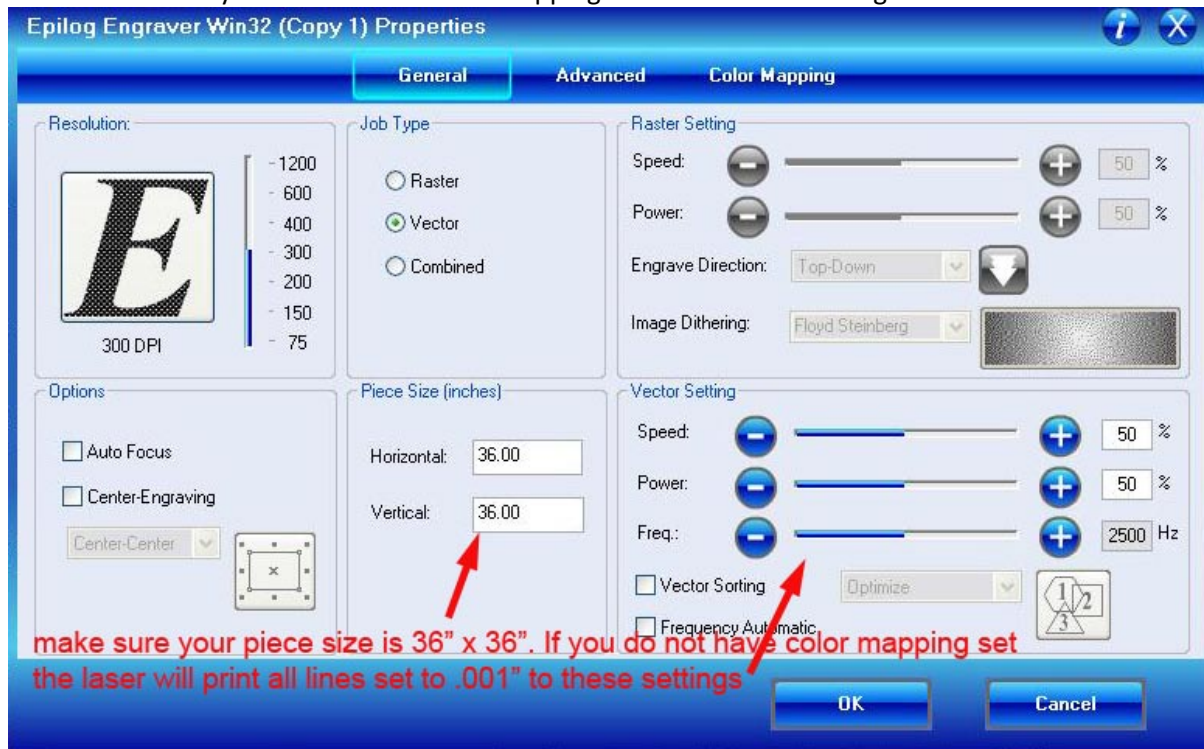
10. Just like the Universal lasers you have to choose the laser and go to “Properties”



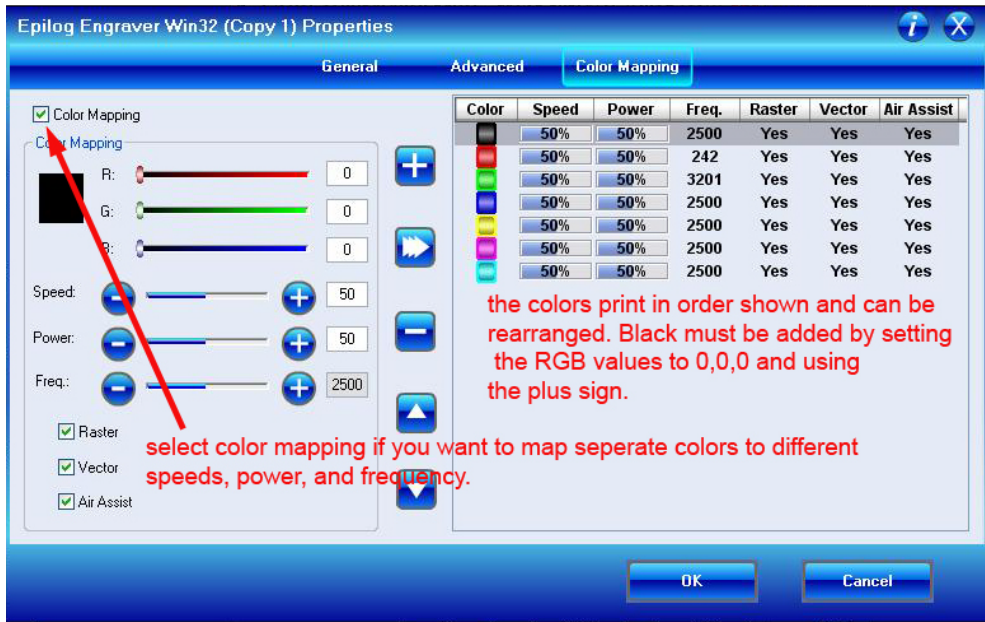
11. Use this configuration file and then change the settings to suit your job. Do not save over this file.



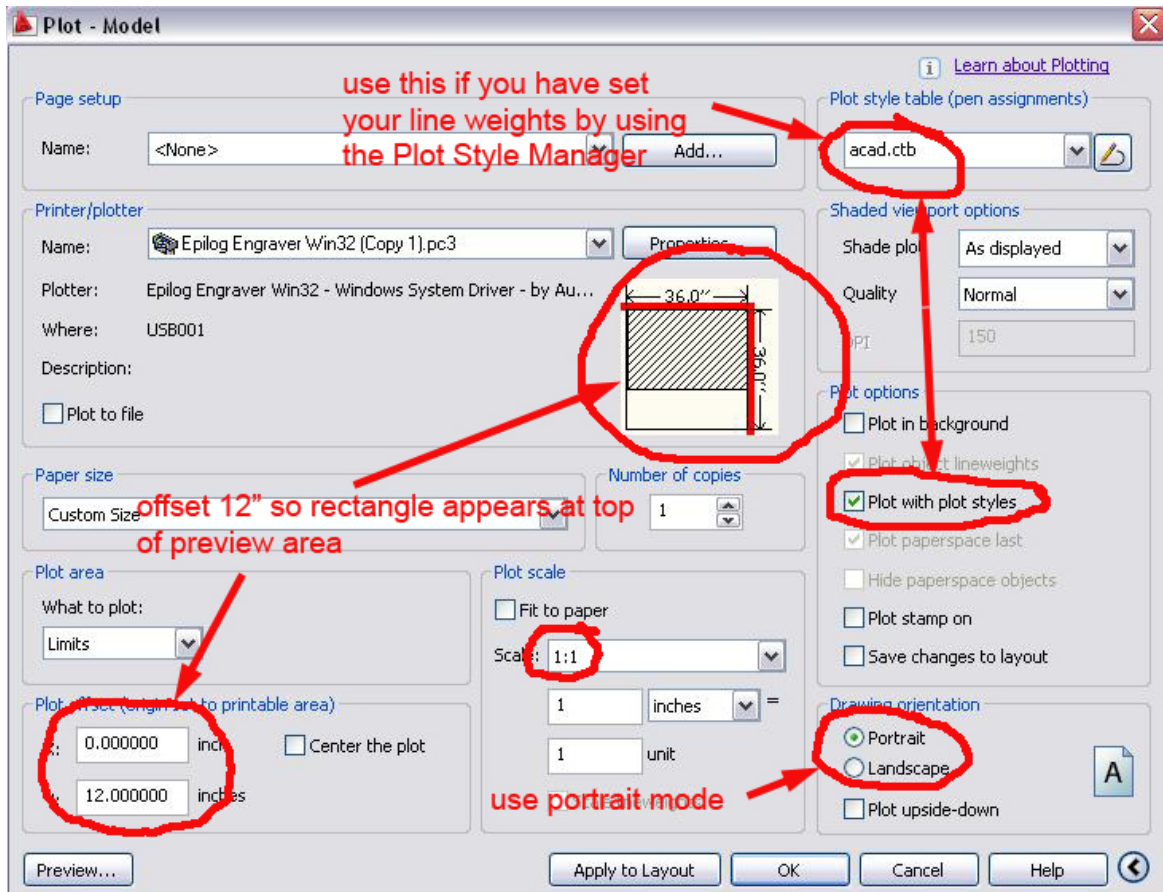
12. If you do select the color mapping check box these settings will be used for all colors.



13. Color Mapping works like the ULS system but you can add many more colors:



14. Your plot dialog box should look like this:





## 15. The Epilog Control Panel



12. The job you sent over most recently is shown in the LCD display.

13. To run that job, just press the **GO** button on the keyboard.

14. To run a previous job, press the **JOB** Key on the keypad and then scroll through the sent jobs by pressing the **UP** Arrow key or the **Down** Arrow Key. The corresponding job names will be displayed in the LCD Display Panel. If more than one job of the same name is sent over, it is numbered after the word Job.

15. Press **GO** when the job to be run is displayed in the LCD Display Panel. The Engraving job will now start.

**IF JOB DOESN'T SHOW UP ON LCD DISPLAY SHUT OFF THE LASER AND TURN IT BACK ON AGAIN, JOB SHOULD SHOW UP, IF NOT, RESEND JOB.**